
FINAL

**Building 182
Old Record Storage Building**

**Historic American Buildings Survey
Level II/III**

**2701 North Harbor Drive,
San Diego, California 92101**

Prepared for
**San Diego Unified Port District (SDUPD)
San Diego County Regional Airport Authority**

April 2010

CH2MHILL

HISTORIC AMERICAN BUILDINGS SURVEY
 RYAN AERONAUTICAL OLD RECORD STORAGE BUILDING
 BUILDING 182 – RECORD STORAGE BUILDING

| | |
|--------------------------------|--|
| <u>Location:</u> | 2701 North Harbor Drive, San Diego, CA 92101, USA |
| <u>Present Owner/Occupant:</u> | San Diego County Regional Airport Authority |
| <u>Present Use:</u> | Vacant |
| <u>Significance:</u> | <p>Building 182 is located within the boundaries of the Ryan Aeronautical Company Historic District, a 46-acre complex containing 17 contributing resources and 30 non-contributing resources. The district is eligible on the local and national levels for the National Register of Historic Places (NRHP) under Criteria A, B, and C and for the California Register of Historical Resources (CRHR) under Criteria 1, 2 and 3. The historic district is eligible under NRHP Criterion A (CRHR 1) for its association with the contribution of aircraft manufacturers at Lindbergh Field to World War II defense production. It is also eligible for its association with Cold War research, development projects, and defense manufacturing. Under Criterion NRHP B (CRHR 2) the district is eligible for its association with aviation pioneer T. Claude Ryan and his aircraft aerospace manufacturing businesses. Ryan Aeronautical Company, under Mr. Ryan’s leadership, made significant contributions to national defense production during World War II, as well as important developments in aerospace research and development in the 1950s and 1960s. The historic district is eligible under NRHP Criterion C (CRHR 3) for its representation of industrial architecture associated with the 1930s and World War II. The district embodies the distinctive architectural characteristics of aircraft manufacturing buildings of the period in Southern California. The building and structures in the district illustrate the design fabrication concepts common to aircraft manufacturing plants from the 1930s to the 1960s. During this period, the aerospace industry played a dominant role in the economy of the region (URS Corporation, 2008).</p> <p>Building 182 is a non-contributing resource to the Ryan Aeronautical Company Historic District.</p> |

Historian: Jessica Feldman

PART I. HISTORICAL INFORMATION

A. Physical History:

1. Date of erection: c. 1940s
2. Architect: Unknown

3. Original and subsequent owners: Ryan Aeronautical Company signed a 50-year lease in 1939. Ryan Aeronautical Company sold to Teledyne Inc. in 1969, and the combined company became Teledyne-Ryan Aeronautical Company (TDY Industries). TDY Industries merged with Allegheny Ludlum Corporation in 1996, and Northrop Grumman Corporation acquired TDY Industries from Allegheny in 1999. Presently, the property is leased by the San Diego County Regional Airport and is under the Jurisdiction of the San Diego Unified Port District.

4. Original plans and construction: Building 182 is a one-story, wood-framed building that measures approximately 30 feet by 40 feet (San Diego County Regional Airport Authority, 2005). The building has corrugated sheet-metal cladding and a gabled roof. The building was constructed with a row of multi-paned steel-framed windows and a set of double-entry personnel doors on the east elevation, hanging doors on the north elevation, and personnel doors with glass insets on the north and east elevations (URS Corporation, 2009).

5. Alterations and additions: Unknown

B. Historical Context:

1. San Diego’s Aviation History:

During the first three decades of the 20th century, the aviation industry was established in San Diego and it became a focal point of San Diego’s activities and reputation. In 1912, the Army founded an air base and the first year-round military aviation school at Rockwell Field on Naval Air Station North Island, San Diego (Macaulay, 1928; Moore, 1960). The creation of the military air bases helped establish aviation in the region during the industry’s pioneering years. In 1928, the Army and Navy had invested \$5,500,000 in the air bases at North Island (Macaulay, 1928). The high profile attained by aviation in the local community during these years resulted in an awareness of the potential future of the industry by the inhabitants of the region. San Diego became the first U.S. city to establish a Municipal Board of Air Control in 1926, and was also the first to issue a complete set of air ordinances (Macaulay, 1928).

In 1922, T. Claude Ryan, an aviation pioneer who began his career as an Army pilot, left the Army and moved to San Diego, where he began giving airplane rides and flying instructions. He soon established the Ryan Flying Company at the Dutch Flats Airfield in San Diego, which later became Ryan Airport. Dutch Flats Airfield was located at present-day Barnett Avenue and Midway Drive, off the current San Diego airport site and not within the current historic district boundaries. In the 1920s, Ryan Airport was the focal point for Ryan’s expanding aeronautical enterprises (flying school, flying service, and an airplane manufacturing company). In the late 1920s, the use of the airport expanded as civil aviation came of age with other companies using Ryan’s field to operate air services. With the help of T. Claude Ryan, civilian aviation flourished in San Diego County during these decades.

In the mid-1920s, the Chamber of Commerce promoted San Diego as the “Air Capital of the West.” The development of what is now Lindbergh Field would be the central effort in this campaign. The committee realized that in order to maintain a leadership role in aviation, San Diego must have an adequate municipal airport. They wanted the location of the airport to be a place that would combine facilities for the operation of land and seaplanes, and be as near to the city of San Diego as possible. They selected an area at the north end of San Diego Bay on City-owned tideland; however, this area did not contain enough area to meet government

requirements. Negotiations were made with the United States Navy to provide portions of the Marine Corps-owned tidelands for the airport expansion (URS Corporation, 2009).

Ryan was instrumental in the development of Lindbergh Field, San Diego's nascent municipal airport, which was established in 1928. In 1929, 4,755 planes and over 20,000 passengers arrived or departed from the Dutch Flats Airfield (Leiser, 2000). Within a few years, the majority of these activities would move to Lindbergh Field. In 1939, Ryan established a manufacturing site on airport grounds, which is the location of the historic district.

2. Ryan Aeronautical Company:

T. Claude Ryan was born in Parsons, Kansas in 1898, but moved with his family to Orange, California in 1912. Ryan began a lifelong relationship with the aviation industry when, around the age of 19, he enrolled at the American School of Aviation in Los Angeles. In 1919, Ryan began studying mechanical engineering at Oregon State College. While in school, he applied to the Army for aviation cadet training and was accepted, but left the Army by January 1922 in hopes of flying as a civilian (National Aviation Hall of Fame, 2009). Ryan moved to San Diego to establish the Ryan Flying Company. The Ryan Flying Company changed its name to Ryan Airlines, Inc. when it was reorganized in 1924 to begin operating the first year-round, scheduled airline service in the United States from Dutch Flats (URS Corporation, 2009). Around the same time, in the mid-1920s, Ryan entered the aircraft manufacturing business with partner Frank Mahoney and created the Ryan M-1 Monoplane, which became one of the best-known air mail carriers in the country. A modified Ryan Monoplane became the *Spirit of St. Louis*, the plane Charles Lindbergh flew from New York to Paris in May 1927 on the first solo flight across the Atlantic Ocean. Ryan sold the company to Mahoney in 1926 and established the Ryan Aeronautical Corporation for the sale and manufacture of aircraft engines. The company changed its name to the Ryan Aeronautical Company in 1934.

Ryan Aeronautical Company signed a 50-year lease, starting in 1939, on land at the southeastern edge of Lindbergh Field along North Harbor Drive. Three buildings from the site of the previous company were relocated to this new location. The Ryan plant was one of several aircraft manufacturers located at Lindbergh Field that contributed to the nation's war effort in the 1940s. At peak wartime production, the Ryan plant had 8,500 employees and annual production exceeded \$55 million. Following the war, workforce was reduced to 1,200 and annual production to \$8 million (URS Corporation, 2009).

The Korean conflict provided the Ryan Aeronautical Company the opportunity to work with electronics for aerospace applications. The role in aerospace electronics led to the development of a variety of aircraft navigation and positioning equipment, including helicopter hovering devices, altimeters, and remote sensors (URS Corporation, 2009).

In 1947, the United States Navy awarded Ryan a contract to research the feasibility of reaction controls for jet aircraft. With jet engines and reaction controls handled by remote control, a Ryan vertical test rig lifted itself off the ground for the first time in 1950. In 1953, the Air Force awarded Ryan a contract to design and build two manned vertical takeoff jet research planes and 2 years later, the Ryan X-13 Vertijet was constructed. In the 1960s, Ryan continued target drone and electronic systems production and vertical takeoff and landing research (URS Corporation, 2009).

In 1969, the company was sold for \$128 million to Teledyne Inc. and became known as Teledyne-Ryan Aeronautical Company (TDY Industries). T. Claude Ryan remained with the company as chairman until his death in 1982. In 1996, TDY Industries merged with Allegheny Ludlum Corporation, and then later became a subsidiary of that company. In 1999, Northrop Grumman Corporation acquired TDY Industries from Allegheny and relocated the plant to a site in Ranch Bernardo, California, leaving the former plant site vacant. The site continues to be mostly vacant, with only a small portion of Building 100 used for administrative offices and several other buildings used for storage.

PART II. ARCHITECTURAL INFORMATION

A. General Statement:

1. Architectural Character: Building 182 lacks distinctive features and characteristics (URS Corporation, 2009).
2. Condition of Building Material: Building 182 is in poor condition.

B. Description of Exterior:

1. Overall Dimensions: Building 182 is approximately 30 feet by 40 feet.
2. Foundations: Concrete
3. Walls: The walls of Building 182 are plywood cladding (San Diego County Regional Airport Authority, 2005).
4. Structural System: Building 182 is a wood-framed building. The roof is comprised of pitch wood trusses with wood beams and a metal deck. Building 182 supports the north end of Building 221 (San Diego County Regional Airport Authority, 2005).
5. Openings:
 - a. Doorways: Building 182 had a set of double-entry personnel doors on the east elevation. One door remains intact. Building 182 has a hanging door on the north elevation and personnel doors with glass insets on the north and south elevations (URS Corporation, 2009). There is a single-entry galvanized-metal personnel door on the east wall of the interior room.
 - b. Windows: Building 182 has a row of multi-paned steel-framed windows under the eave line (URS Corporation, 2009).
6. Roof: Building 182 has a gabled roof consisting of corrugated sheet-metal on wood trusses (San Diego County Regional Airport Authority, 2005).

C. Description of Interior:

Floor Plans: Building 182 is a one-story, wood-framed building approximately 30 feet by 40 feet (San Diego County Regional Airport Authority, 2005). The interior has an interior room, located in the middle of the west wall, approximately 10 feet by 15 feet. This room has wood framing with plaster and lathe wall covering. The building has an otherwise open interior.

D. Site:

Historic Landscape Design: None

PART III. SOURCES OF INFORMATION

A. Early Views: N/A

B. Interviews: N/A

C. Bibliography

1. Primary and Unpublished Sources:

San Diego County Regional Airport Authority (SDCRAA). 2005. Teledyne Ryan Facility Study. January 1.

San Diego Unified Port District (SDUPD). 2009. 2701 North Harbor Drive Demolition Project Environmental Impact Report. April.

URS Corporation. 2008. Department of Parks and Recreation Primary Record form for the Ryan Aeronautical Company Historic District (P-37-028619, CA-SDI-18401H). January.

URS Corporation. 2009. *Appendix B. Cultural Resources Assessment Report. 2701 North Harbor Drive Demolition Project Draft EIR (UPD #83356-EIR-713)*. April.

Van Wormer, Stephen. 2005. Department of Parks and Recreation Primary Record form for the Ryan Aeronautical Company Historic District (P-37-028619, CA-SDI-18401H). Prepared by Walter Enterprises. December.

Van Wormer, Stephen, Mary Robbins-Wade. 2006. *Historic Architectural Survey Report: San Diego International Airport Master Plan*. Prepared for San Diego County Regional Airport Authority. May.

2. Secondary and Published Sources:

Leiser, Edward. 2000. "San Diego Flying Days." Copies of manuscripts on file at the San Diego Historical Society and San Diego Aerospace Museum, San Diego, CA.

Macaulay, Major T. 1928. *"The Story of Lindbergh Field, San Diego's 'Triple A' Municipal Airport Lindbergh Field."* Dedication brochure, Lindbergh Field Vertical Files, San Diego Aerospace Museum Library, San Diego, CA.

Moomjian, Scott A. and Wendy L. Tinsley. 2001. *Historic Survey Report of the Former Teledyne-Ryan Aeronautical Complex, 2701 North Harbor Drive, San Diego, California, 92101*. Prepared by Office of Maria Burke Lia, Attorney at Law, 427 C Street, Suite 416, San Diego, CA 92101. Prepared for Jones Lang La Salle, 2701 North Harbor Drive, Building 100, San Diego, California 92101. Copy on file with the San Diego Regional Airport Authority.

Moore, Floyd Roscoe. 1960. San Diego Airport Development. Thesis, Political Science, San Diego State College, San Diego, CA.

National Aviation Hall of Fame. T. Claude Ryan- Biography.

http://nationalaviation.blade6.donet.com/components/content_manager_v02/view_nahf/htd

ocs/menu_ps.asp?NodeID=-2144693577&group_ID=1134656385&Parent_ID=-1 (accessed November 5, 2009)

San Diego Unified Port District. 1966. *San Diego Unified District Annual Report: 1965-66*. Carl Reupsch Collection, San Diego Historical Society, San Diego, CA.

San Diego Union. Various Dates. Issues cited in text from Lindbergh Field Vertical Files, San Diego Historical Society, San Diego, CA.

San Diego Unified Port District. 1968. *San Diego Unified District Annual Report: 1967-68*. Carl Reupsch Collection, San Diego Historical Society, San Diego, CA.

San Diego Unified Port District. 1971. *San Diego Unified District Annual Report: 1970-71*. Carl Reupsch Collection, San Diego Historical Society, San Diego, CA.

San Diego Unified Port District. 1977. *San Diego Unified District Annual Report: 1976-77*. Carl Reupsch Collection, San Diego Historical Society, San Diego, CA.



Building 182 - Old Record Storage Building, San Diego, California, Date unknown.
Teledyne-Ryan Archives.



Building 182 - Old Record Storage Building, Northeast Oblique, San Diego, California,
October 2009.



Building 182 - Old Record Storage Building, East Elevation, San Diego, California, October
2009.



Building 182 - Old Record Storage Building, North Elevation, San Diego, California,
October 2009.



Building 182 - Old Record Storage Building, Northwest Oblique, San Diego, California, October 2009.



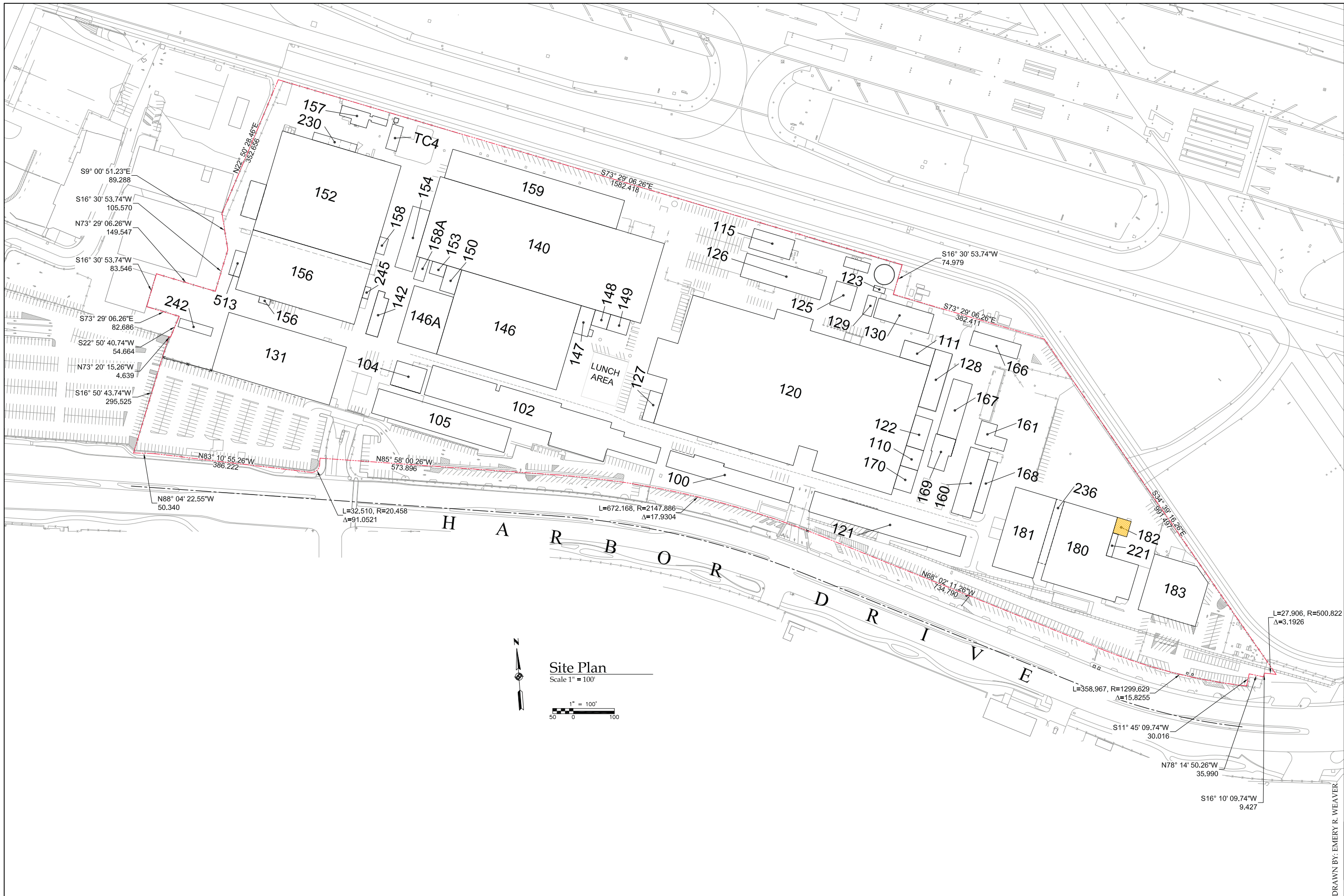
Building 182 - Old Record Storage Building Interior, facing Southwest, San Diego, California, October 2009.



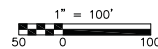
Building 182 - Old Record Storage Building, Southeast Oblique, San Diego, California, October 2009.



Building 182 - Old Record Storage Building Interior, detail of ceiling, San Diego, California, October 2009.



Site Plan
Scale 1" = 100'



| | | | |
|---|---------------------------------------|--|------------------------|
| Library of Congress Index Number | HISTORIC AMERICAN BUILDINGS SURVEY | SURVEY NO. | SHEET 1 OF 4 SHEETS |
| NAME AND LOCATION OF STRUCTURE | | SAN DIEGO COUNTY | |
| BUILDING 182 - OLD RECORD STORAGE BUILDING | | SAN DIEGO, CALIFORNIA | |
| 2701 N. HARBOR DRIVE | | SAN DIEGO COUNTY | |
| DRAWN BY: EMERY R. WEAVER | | RYAN AERONAUTICAL COMPANY HISTORIC DISTRICT JANUARY 2010 | |